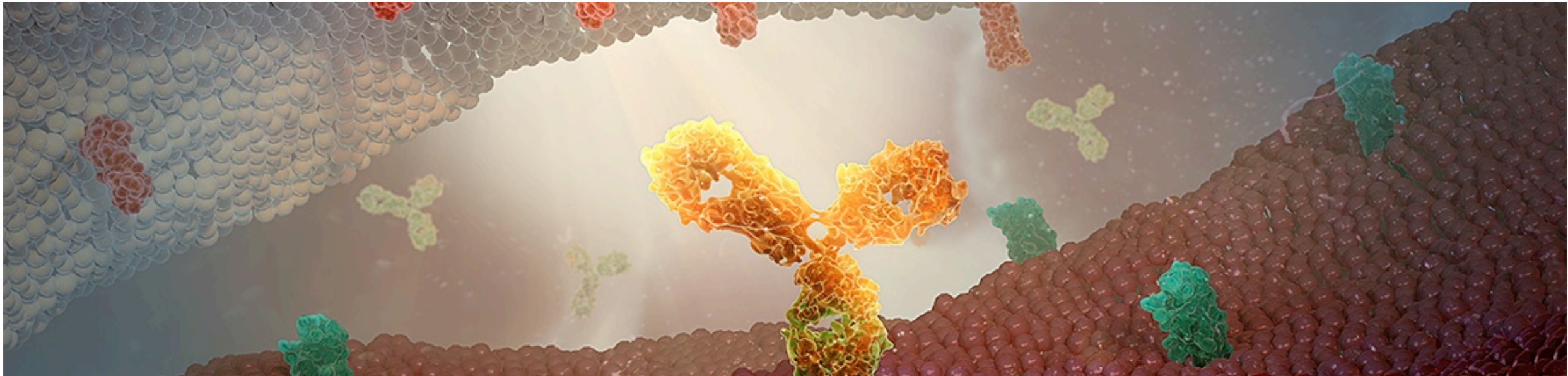


Industry Academia Collaborations

Marc Zarenda

Scientific Director, Oncology

9th August 2019



- The information is not to be copied or distributed in any manner or format.

Disclaimer

- The information contained in this slide deck is for information purposes only based on unsolicited requests from physicians.
- The information is not to be copied or distributed in any manner or format.
- AstraZeneca does not, under any circumstances, promote its products for off-label or unapproved uses.



Types of research a typical pharma company conducts

1. Globally sponsored trials
2. Externally Sponsored Research (ESR) , also called IITs
3. Real World Evidence (RWE)



Globally Sponsored Trials

- **Company or CRO run**
- **AstraZeneca Canada Oncology data**
 - 28 ongoing trials in 2019
 - 50 trials over past 5 years in Canada
 - 200 sites, 1400 patients enrolled, over 600 patients randomized
- **Global Oncology Clinical Trial Hub in Toronto**



Externally Sponsored Research (1)

- **Can be Unsolicited Individual Investigator Proposals**
 - Company delegates all sponsor responsibilities to Investigator
 - Design of trial, analysis and results belong to the Investigator
 - Normally small number of sites involved
- The information is not to be copied or distributed in any manner or format.



Externally Sponsored Research (2)

- **Can be with Collaborative/Academic Groups**
 - Company and Collaborative group agree on design, results belong to Collaborative group
 - Can be larger in scale compared to single center ESRs
 - Often are randomized Ph II/ III with international participation



CCTG-Sponsored Immuno-Oncology Externally Sponsored Research Studies

	Setting	Phase	Study
LUNG	Adjuvant NSCLC	III	BR.31: A phase III prospective double blind placebo controlled randomized study of adjuvant durvalumab in completely resected non-small cell lung cancer
	1L NSCLC	II	BR.34: A randomized trial of durvalumab and tremelimumab +/- platinum based chemotherapy in patients with metastatic (stage IV) squamous or non-squamous NSCLC
GI	Advanced CRC	II	CO.26: A Phase II randomized study of Durvalumab plus Tremelimumab and Best Supportive Care vs Best Supportive Care alone in Chemotherapy-Refractory Advanced Colorectal Adenocarcinoma
	1L PDAC	II	PA.7: A Randomized Phase II Trial of Gemcitabine and Nab-Paclitaxel vs. Gemcitabine, Nab-Paclitaxel and Durvalumab and Tremelimumab as 1 st line therapy in Metastatic Pancreatic Adenocarcinoma
GU	mCRPC	II	IND.232: A Phase II Study of durvalumab with or without tremelimumab in Patients with Metastatic Castration Resistant Prostate Cancer
	MIBC	II	BL.13: A Randomized phase II trial assessing trimodality therapy with or without adjuvant durvalumab to treat patients with muscle-invasive bladder cancer
BREAST	MBC	Ib	IND.229: Phase Ib pharmacodynamic study of durvalumab in patients with HER-2 positive metastatic breast cancer (MBC) receiving trastuzumab
HNSCC	LA-OSCC	II	HN.9: Randomized Phase II Study of Cisplatin plus Radiotherapy versus Durvalumab plus Radiotherapy followed by Adjuvant Durvalumab in Intermediate Risk, HPV-Positive, Locoregionally Advanced Oropharyngeal Squamous Cell Cancer (LA-OSCC)
RARE TUMOURS	Adv Rare Tumours	II	A phase II study of durvalumab and tremelimumab in patients with advanced rare tumours
PAN-TUMOUR	Adv Solid Tumours	II	IND.238: Phase II study of durvalumab retreatment in patients who discontinued prior checkpoint therapy due to immune related toxicity
	Adv Solid Tumours	Ib	IND.226: A phase 1b study of durvalumab +/-tremelimumab in patients with advanced incurable solid malignancies receiving standard chemotherapy regimens

Real World Evidence

- **Industry sponsored or in collaboration with Investigators**
- **RWE becoming more important to payers and regulatory authorities**
- **World Lung Conference in 2018, 10 Canadian specific RWE presented**



AstraZeneca Canada Evidence at WCLC and ESMO



Principle Investigator	Study Type	Study, Abstract Title	Relevant Brand	Conference	Authors
Dr. Parneet Cheema, William Osler	Global RWE study	Real-world study of osimertinib in EGFR T790M-mutated non-small cell lung cancer (NSCLC): ASTRIS Canadian cohort analysis	TAGRISSO	WCLC	Cheema P, Liu G, Burkes R, Owen S, Yu J, Hao D, Rothenstein J, Martel S, Iqbal M, Juergens R, Lam W, Laskin J
Dr. Winson Cheung, Alberta Health Services	Local RWE study	Treatment patterns and survival of patients with stage IV non-small cell lung cancer (NSCLC) in the era of novel therapies	TAGRISSO, IMFINZI	WCLC	Yusuf D, Hurry M, Walton R, Cheung C
Dr. Winson Cheung, Alberta Health Services	Local RWE study	Treatment patterns and outcomes of stage III non-small cell lung cancer (NSCLC): real world evidence of how our patients fare	IMFINZI	WCLC	Yusuf D, Walton R, Hurry M, Cheung C
HOPE Research Group, Sunnybrook	Local RWE study	Real world treatment patterns and survival of stage IV non-small cell lung cancer (NSCLC) in Ontario, Canada	TAGRISSO, IMFINZI	WCLC	Seung SJ, Hurry M, Walton R, Evans WK
HOPE Research Group, Sunnybrook	Local RWE study	Patient characteristics, treatment patterns and survival for unresectable stage III non-small cell lung cancer in Ontario, Canada	IMFINZI	WCLC	Seung SJ, Hurry M, Walton R, Evans WK
Dr. Geoffrey Liu, PMH	Local RWE study	PRO-CTCAE toxicities in advanced NSCLC patients with EGFR mutations: A Real World Assessment	TAGRISSO	WCLC	Heuniken K, Hurry M, Jiang S, Labbe C, Brown MC, Eng L, Naik H, Liang M, Patel D, Bradbury PA, Leighl NB, Shepherd FA, Xu W, O'Kane GM, Walton R, Liu G
Dr. Geoffrey Liu, PMH	Local RWE study	Predictors of Health Utility Scores (HUS) in advanced EGFR-mutated NSCLC	TAGRISSO	WCLC	Jiang S, Hurry M, Heuniken K, Brown MC, Liang M, Patel D, Labbe C, Eng L, Naik H, Bradbury PA, Leighl NB, Shepherd FA, Xu W, Liu G, Walton R, O'Kane
Dr. Geoffrey Liu, PMH	Local RWE study	Real-World Evaluation of Tolerability in Older NSCLC Adult Patients (≥75 years old) with EGFR-mutated NSCLC	TAGRISSO	WCLC	Jiang S, Hurry M, Heuniken K, Brown MC, Liang M, Patel D, Labbe C, Eng L, Naik H, Bradbury PA, Leighl NB, Shepherd FA, Xu W, Liu G, Walton R, O'Kane
Cornerstone Research Group	Economic model	The impact of Treatment Evolution in NSCLC (iTEN) Model: Development and Validation	TAGRISSO, IMFINZI	WCLC	Moldaver D, Hurry M, Tran D, Evans WK, Cheema PK, Sangha R, Burkes R, Melosky B, Orava E, Grima D
Cornerstone Research Group	Economic model	The impact of Treatment Evolution in NSCLC (iTEN) Model: Survival and cost of treating patients with advanced NSCLC in 2017	TAGRISSO, IMFINZI	WCLC	Moldaver D, Hurry M, Tran D, Evans WK, Cheema PK, Sangha R, Burkes R, Melosky B, Orava E, Grima D
Dr. Quincy Chu, Cross Cancer Institute	Local RWE study	Biopsy on Progression in EGFR Mutation Positive (EGFRm) Advanced Non-Small Cell Lung Cancer (aNSCLC) patients (pts) - A Canadian Experience	TAGRISSO	ESMO	Chu Q, Agha A, Devost N, Walton R, Ghosh S, Ho C



Questions

